

KO-Validated NK2 homeobox 1 Recombinant Rabbit mAb



Catalog #: 71148

Aliases

NKX2-1; NK2 Homeobox 1; TTF-1; TTF1; Thyroid Transcription Factor 1; NKX2A; TITF1; Thyroid-Specific Enhancer-Binding Protein; Homeobox Protein NK-2 Homolog A; Homeobox Protein Nkx-2.1; Thyroid Nuclear Factor 1; T/EBP; BCH; NK-2 Homolog A; Benign Chorea; NKX2.1; NMTC1; NK-2; TEBP; BHC

Background

Gene Name: NKX2-1
NCBI Gene Entry: 7080
UniProt Entry: P43699

Application Information

Molecular Weight: Predicted, 39 kDa; observed, 38-42 kDa
Clonality: Rabbit monoclonal antibody
Clone ID: 25GB645
Species Reactivity: Human, mouse
Applications Tested: Western blotting (WB), flow cytometry (FCM), immunocytochemistry (ICC)

Immunogen

A synthesized peptide derived from human TTF1

Isotype

Rabbit IgG

Storage Buffer

Supplied in PBS (pH 7.4) containing 50% glycerol, and 0.02% sodium azide.

Storage

Store at -20 °C for one year.

Recommended Dilutions

Western Blotting (WB): 1:1,000-1:5,000
Flow Cytometry (FCM): 1:200-1:2,000
Immunocytochemistry (ICC): 1:100-1:1,000

SUPPORT

SUPPORT@GENUINBIOTECH.COM
TEL: +1-540-855-7041

ORDERS

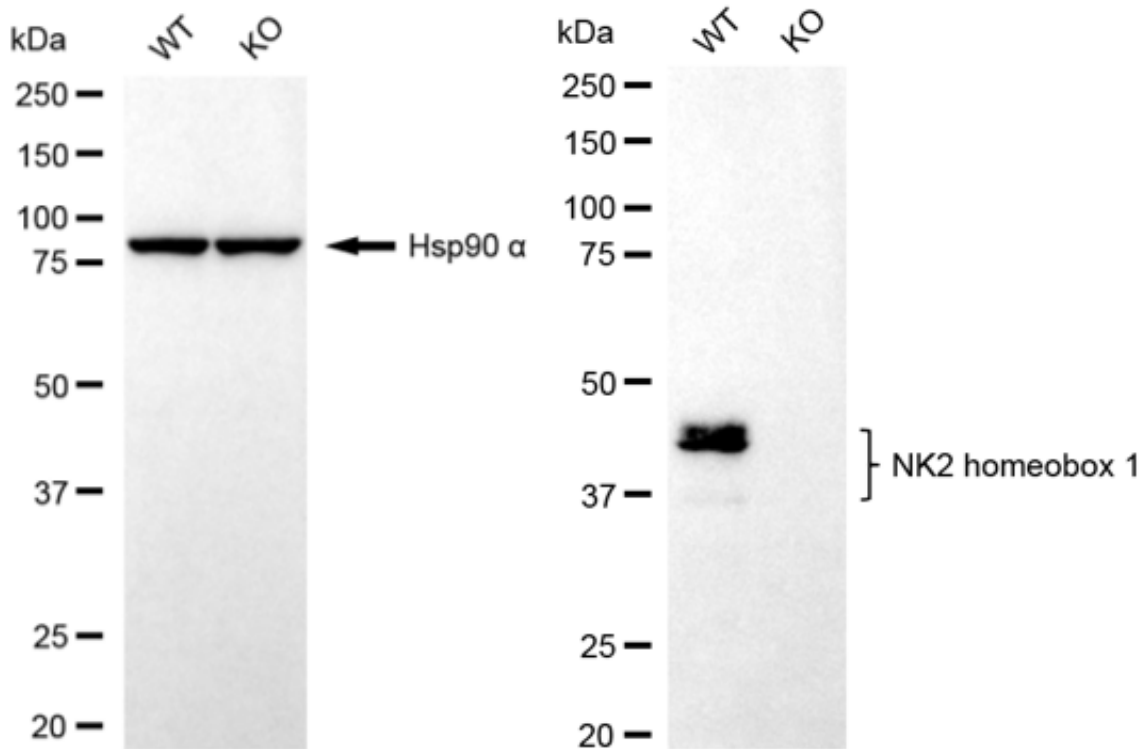
SALES@GENUINBIOTECH.COM
FAX: +1-540-855-7041

WWW.GENUINBIOTECH.COM

KO-Validated NK2 homeobox 1 Recombinant Rabbit mAb

Note: This product is for research use only.

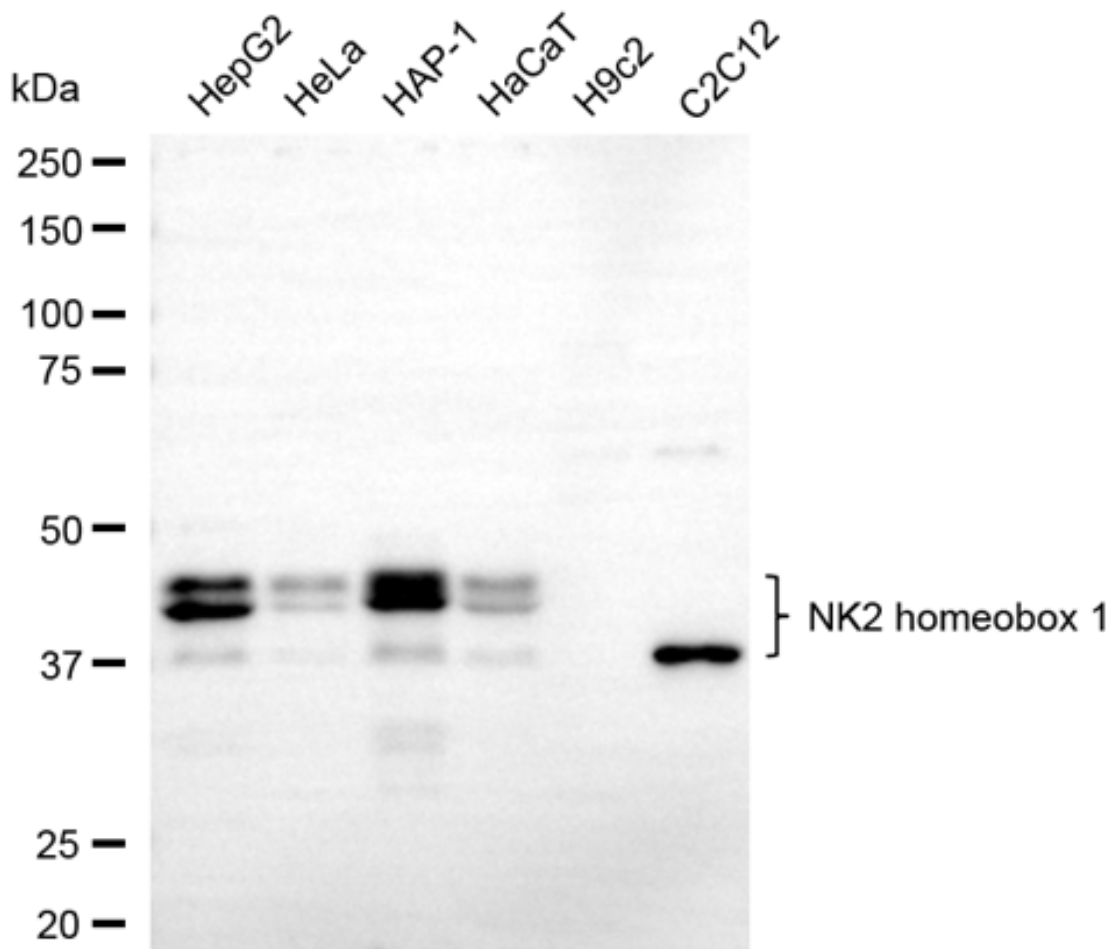
Validation Data



Copyright ©2025 Genuin Biotechnologies LLC

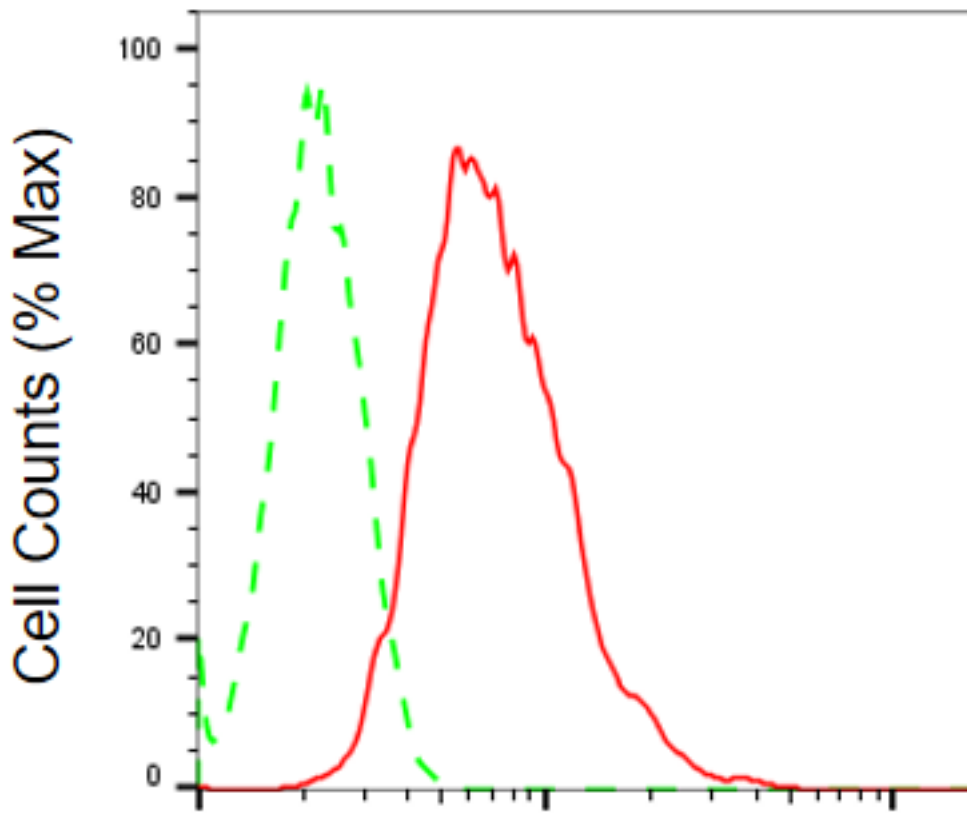
Western blotting analysis using NK2 homeobox 1 antibody (Cat#71148). NK2 homeobox 1 expression in wild type (WT) and NK2 homeobox 1 (NKX2-1) knockout (KO) HSHC cells with 20 μ g of total cell lysates. Hsp90 α serves as a loading control. The blot was incubated with NK2 homeobox 1 antibody (Cat#71148, 1:5,000) and HRP-conjugated goat anti-rabbit secondary antibody (Cat#201, 1:20,000) respectively. Image was developed using NaQ™ ECL Substrate Kit (Cat#716).

KO-Validated NK2 homeobox 1 Recombinant Rabbit mAb



Copyright ©2025 Genuin Biotechnologies LLC

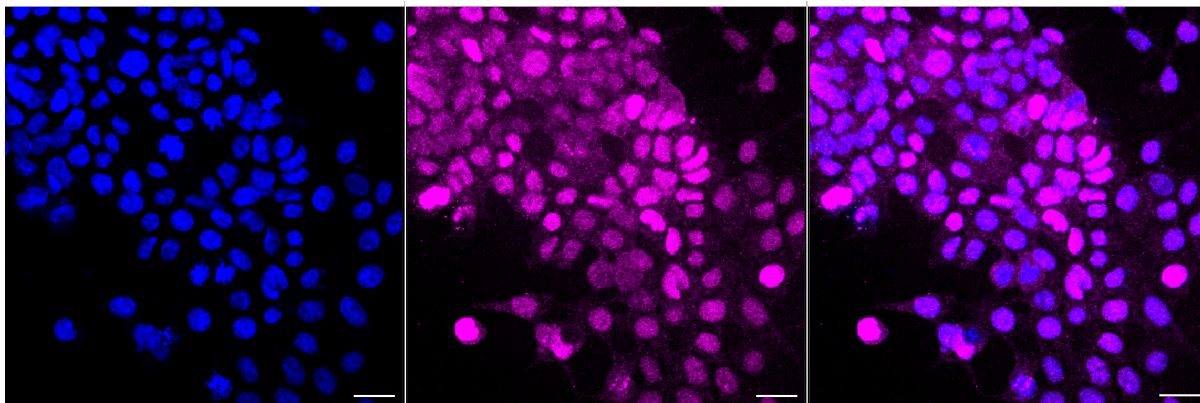
Western blotting analysis using NK2 homeobox 1 antibody (Cat#71148). Total cell lysates (30 µg) from various cell lines were loaded and separated by SDS-PAGE. The blot was incubated with NK2 homeobox 1 antibody (Cat#71148, 1:5,000) and HRP-conjugated goat anti-rabbit secondary antibody (Cat#201, 1:20,000) respectively. Image was developed using FeQ™ ECL Substrate Kit (Cat#226).



Copyright ©2025 Genuin Biotechnologies LLC

NK2 homeobox 1-Alexa Fluor® 647

Flow cytometric analysis of NK2 homeobox 1 expression in HAP-1 cells using NK2 homeobox 1 antibody (Cat#71148, 1:2,000). Green, isotype control; red, NK2 homeobox 1.



Copyright ©2025 Genuin Biotechnologies LLC

Immunocytochemical staining of HAP-1 cells with NK2 homeobox 1 antibody (Cat#71148, 1:1,000). Nuclei were stained blue with DAPI; NK2 homeobox 1 was stained magenta with Alexa

SUPPORT

SUPPORT@GENUINBIOTECH.COM
TEL: +1-540-855-7041

ORDERS

SALES@GENUINBIOTECH.COM
FAX: +1-540-855-7041

WWW.GENUINBIOTECH.COM

KO-Validated NK2 homeobox 1 Recombinant Rabbit mAb

PAGE 5

Fluor® 647. Images were taken using Leica stellaris 5. Protein abundance based on laser Intensity and smart gain: Medium. Scale bar, 20 µm.

SUPPORT

SUPPORT@GENUINBIOTECH.COM
TEL: +1-540-855-7041

ORDERS

SALES@GENUINBIOTECH.COM
FAX:+1-540-855-7041

WWW.GENUINBIOTECH.COM